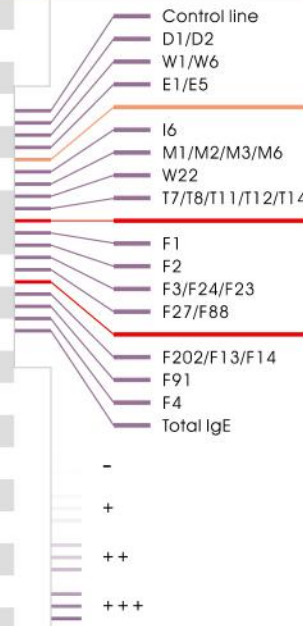


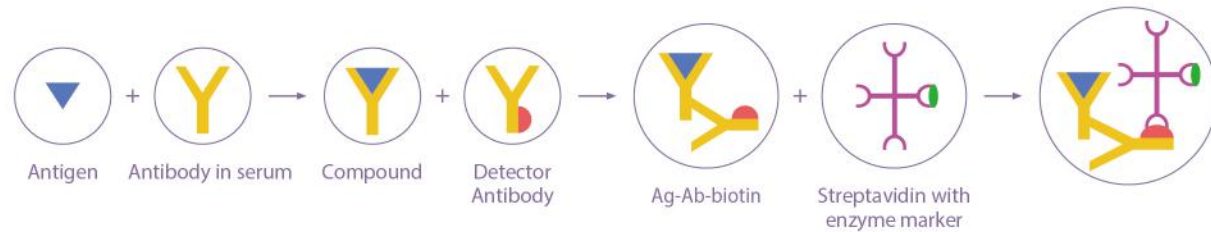
» Foresight® Allergen test kit test items

LOCATION	ABBREVIATION	TEST ITEMS
1	Control line	
2	D1/D2	Derm.pteronysinus, Derm.farinae,
3	W1/W6	Short ragweed, mugwort
4	E1/E5	Cat, dog dander
5	Spacing line (red color)	
6	I6	Cockroach
7	M1/M2/M3/M6	Alternaria alternata, Aspergillus fumigatus, Penicillium chrysogenum, Cladosporium herbarum
8	W22	Japanese Hop
9	T7/T8/T11/T12/T14	White Oak, Elm, Sycamore, Willow, Cottonwood
10	Spacing line (red color)	
11	F1	Egg white
12	F2	Cow's milk
13	F3/F24/F23	Fish, shrimp, crab
14	F27/F88	Beef, mutton
15	Spacing line (red color)	
16	F202/F13/F14	Cashew nut, peanut, soybean
17	F91	Mango
18	F4	Wheat
19	Total IgE	Total IgE



» Foresight® Allergen Test Kit

Principle of immunoblotting with biotin-streptavidin amplification methode



» Ordering Information

Product Name	Catalogue	Format	Package size
Foresight® Allergen Test Kit	I031-1011	Cassette	10 Tests/ Kit
	I031-1101	Strip	20 Tests/ Kit

All right reserved. Programs and Specifications subject to changes without prior notice, please contact local distributors.



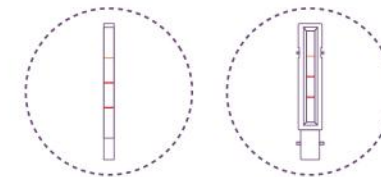
aconlabs.com

ACON Laboratories, Inc.
5850 Oberlin Drive, #340, San Diego, CA 92121, USA
Tel: 1.858.875.8000
Fax: 1.858.200.0729
Email: info@aconlabs.com

Foresight®



ALLERGEN TEST KIT



Immunoblot assay for 30 allergens in one test strip/cassette



Immunoblot Assay



Food/Inhalation Allergens



in vitro Test - Serum



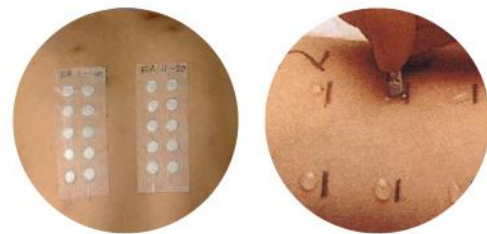
Manual/Automated Operation

» Allergic diseases

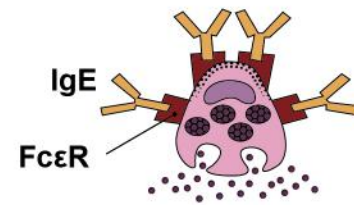
Allergies, also known as allergic diseases, are a number of conditions caused by hypersensitivity of the immune system to typically harmless substances in the environment. These diseases include hay fever, food allergies, atopic dermatitis, allergic asthma, and anaphylaxis. The severity of allergies varies from person to person and can range from minor irritation to anaphylaxis- a potentially life-threatening emergency. Early diagnosis and avoiding exposure to the corresponding allergens are currently effective prevention methods.

» Overview of allergy diagnosis

The diagnosis of allergies, or allergic disease, is based on a combination of the person's clinical history, family history, physical examination and laboratory tests. Laboratory tests include skin tests and blood tests.



In vivo testing



In vitro testing

In vitro tests are safer and more reliable than in vivo tests. In vitro tests have become the most commonly used diagnostic method.

	In vivo tests	In vitro tests
Safety	May cause allergic reaction High risk	Detect specific IgE in serum Low risk
Test range	Cannot detect food allergens	Can detect several allergens in one test, great repeatability
Specificity	Some allergens cause skin irritation, high false positive rate	High specificity and good sensitivity
Incidence period	Extensive skin lesions cannot be detected	No affected by skin lesions
Medication	Taking anti-histamines and immunosuppressants cannot be detected	No affected by medication

» Specifications of Foresight® Allergen Test Kit

- **Test Items:** 15 Specific IgE + Total IgE for 30 kinds of common allergens in one strip
- **Methodology:** Immunoblotting/ Western blot
- **Time to Result:** 2.5h
- **Specimen Type:** Serum
- **Specimen Volume:** 250 µl
- **Test Mode:** Manual operation or Automated operation

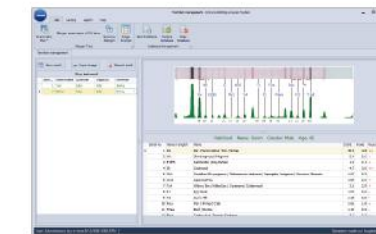
- **Packaging Size:** 10 tests/kit or 20 tests/kit
- **Storage Temperature:** 2-8° C
- **Shelf life:** 24 months
- **Sensitivity:** High sensitivity, up to 0.35 IU/mL
- **Result Reading:** Visual reading or digital scanning (Immunoblotting Analysis System software)

» Advantages of Automated Operation

- Closed tubing system with ready to use software
- Minimizes the operator exposures to potentially infective sample
- Carrying out the preparation of strips as well as all incubation and washing steps
- Standardized incubation of immunoblot strips- higher precision and reproducibility
- High throughput, up to 36 samples per run, take 2.5 hours
- 6 sample injection tubes prevent cross contamination risk
- User-friendly operation and easy maintenance, intuitive screen software that permits the operator to maintain the system with a minimum of formal training



XD236



Digital Scanner and Software to give quantitative results

» Interpretation of results

Comparing the color intensity of reacted strip with the color chart, the interpretation of results (or digital scanning) as following:

Class	Concentration of Specific IgE	Results	Color intensity	Clinical feature	
0	-	<0.35 IU/ml	Negative	No colored line appears	No clinical symptoms
1	+	0.35-0.69 IU/ml	Low concentration of Allergen Specific IgE Antibody	Faint colored line	Partical clinical symptoms
2		0.7-3.49 IU/ml			
3	++	3.5-17.49 IU/ml	Medium concentration of Allergen Specific IgE Antibody	Distinct colored line	Many clinical symptoms
4		17.5-49.9 IU/ml			
5	+++	50-100 IU/ml	High concentration of Allergen Specific IgE Antibody	Strong colored line	Frequent clinical symptoms
6		>100 IU/ml			