

Ultra Cholesterol Management Software User's Guide

For data transfer to a Personal Computer (PC).

For professional and self-testing in vitro diagnostic use only.

INTENDED USE

These instructions define the format and timing for data transmission from the Ultra Cholesterol Meter. Data transferred from the meter includes type, SN, date format, date, time, Cholesterol and Control. The intended use is to provide information required to transfer data to an external computer with suitable PC software.

SYSTEM REQUIRED

The following are minimum requirements for Ultra CHOL Management Software operation:

Operating System: Windows 7 (32 bit / 64 bit); Windows Vista (32 bit); Windows XP (32 bit)

Processor: Pentium 4-class processor or equivalent

Memory: 512 MB

Hard Disk Space: 100 MB (depends on amount of data to be managed)

Connection Port: Available USB port (USB to Serial port adapter accessory is available)

Display: At least 1024 × 768

MATERIALS REQUIRED

- Ultra Cholesterol Meter
- USB Cable

Note: To make use of this software, you need a USB Cable from **ACON**.

DIRECTIONS FOR USE

Installing the Ultra Cholesterol Management Software

Note: Please be sure to install the Ultra Cholesterol Management Software under administrator's privilege.

1. Download the Ultra Cholesterol Management Software to your PC. Double click "Ultra CHOL Management Software _Setup" to start the installation process.

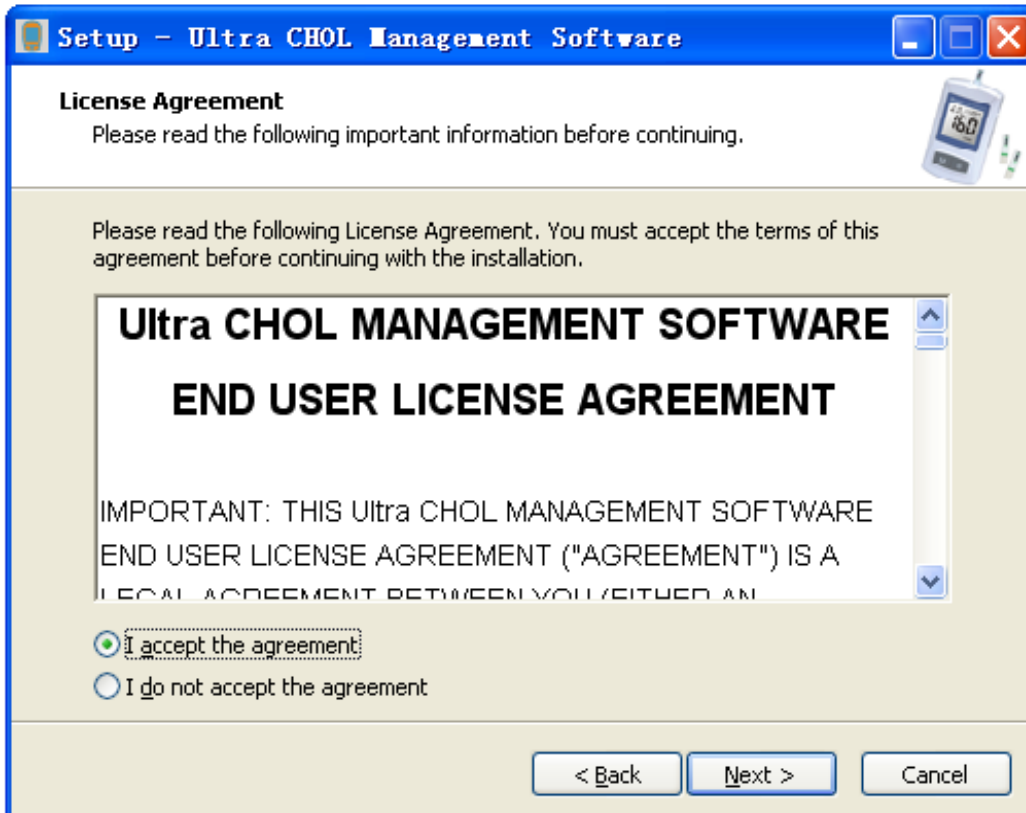


Ultra CHOL
Management
Software_Setup.exe

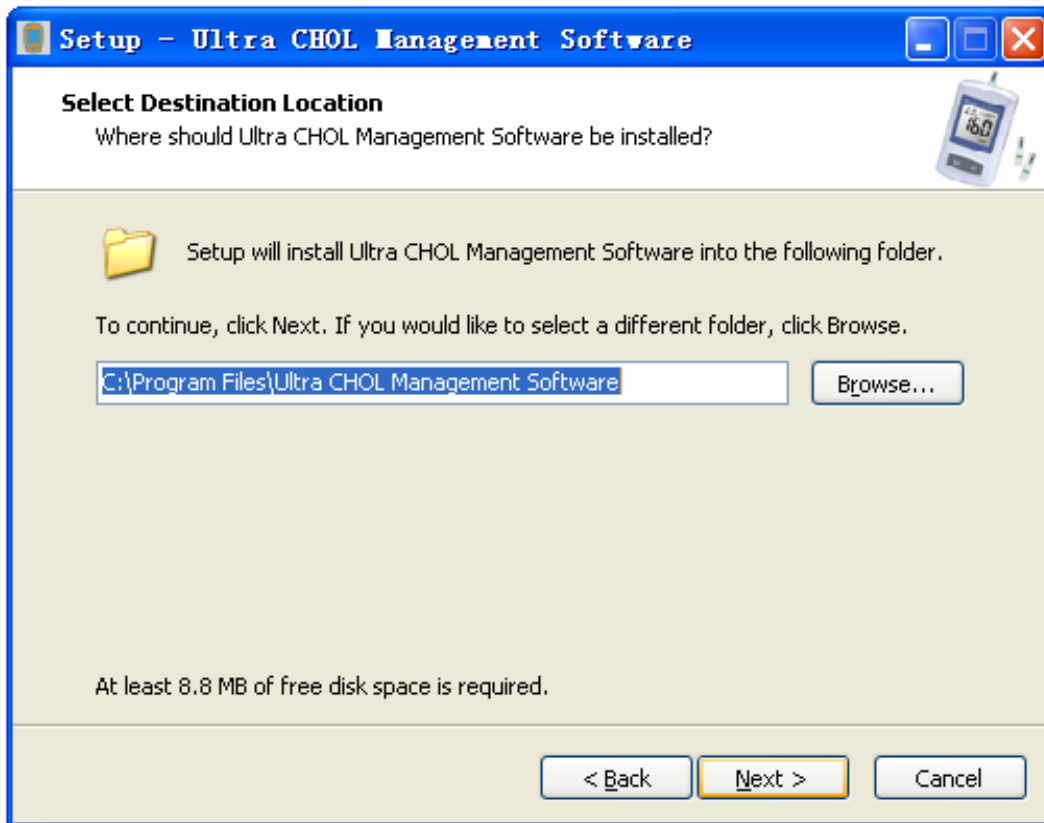
2. The Setup Wizard will display as shown below. Click **Next>**.



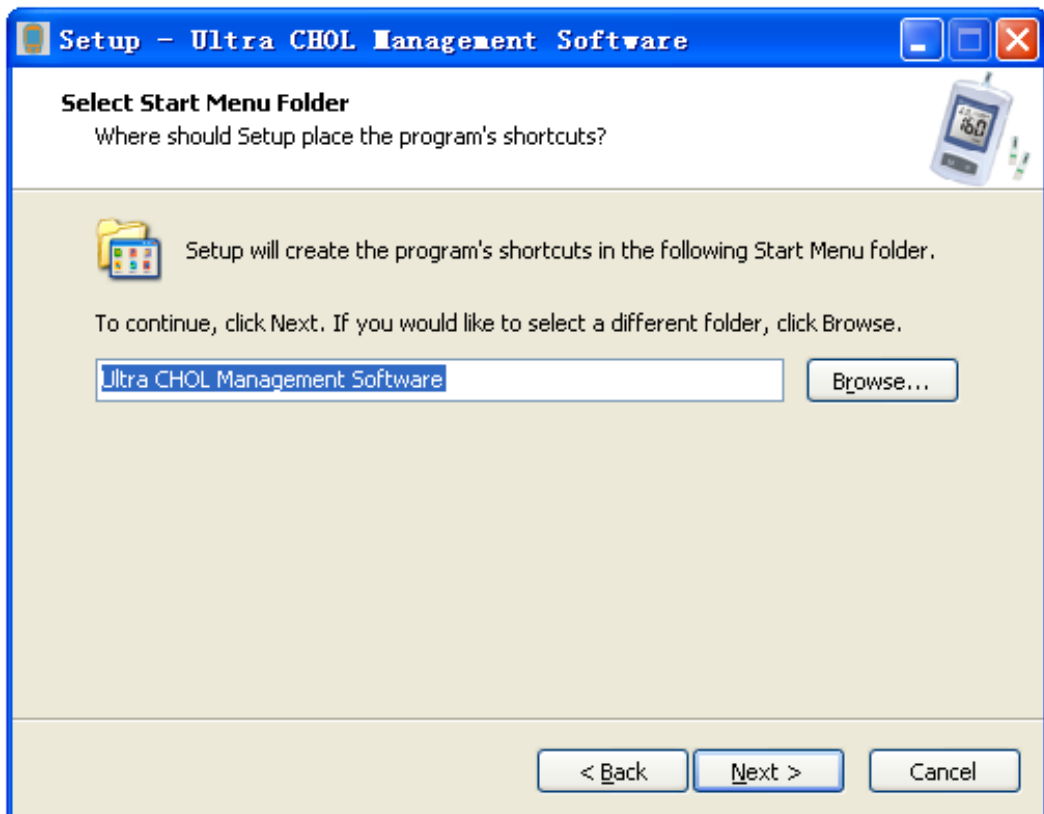
3. The License Agreement will be displayed as shown below. If you agree with the terms, select "I accept the agreement" option and click **Next>**.



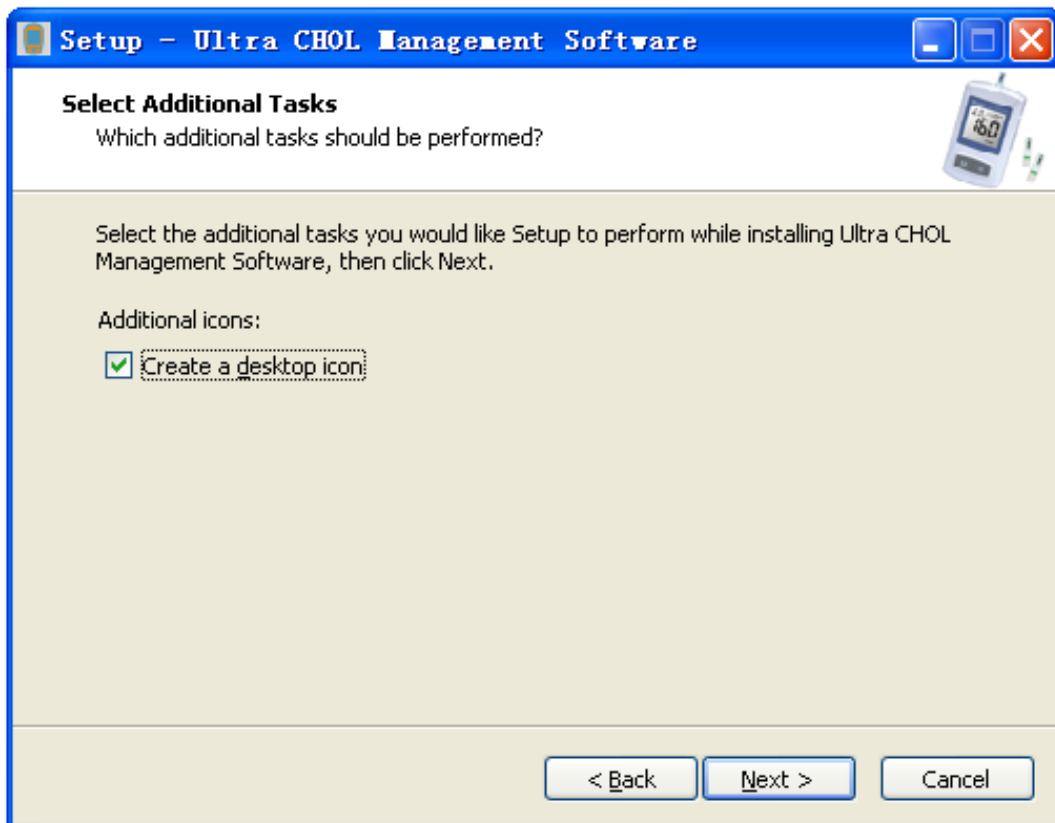
4. The Destination Location will be displayed as shown below. Select a destination and click **Next>**.



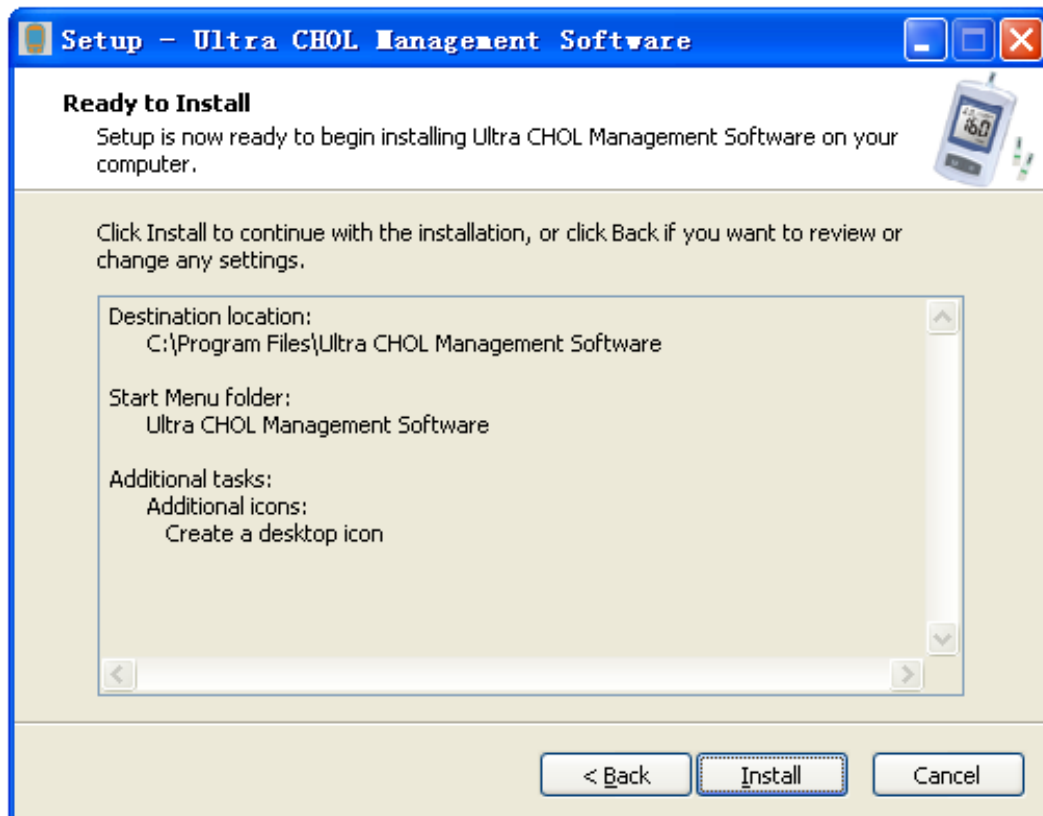
5. Select the Start Menu Folder screen which will be displayed as shown below. The default folder is "Ultra CHOL Management Software". It is suggested not to change default settings. Click **Next>**.



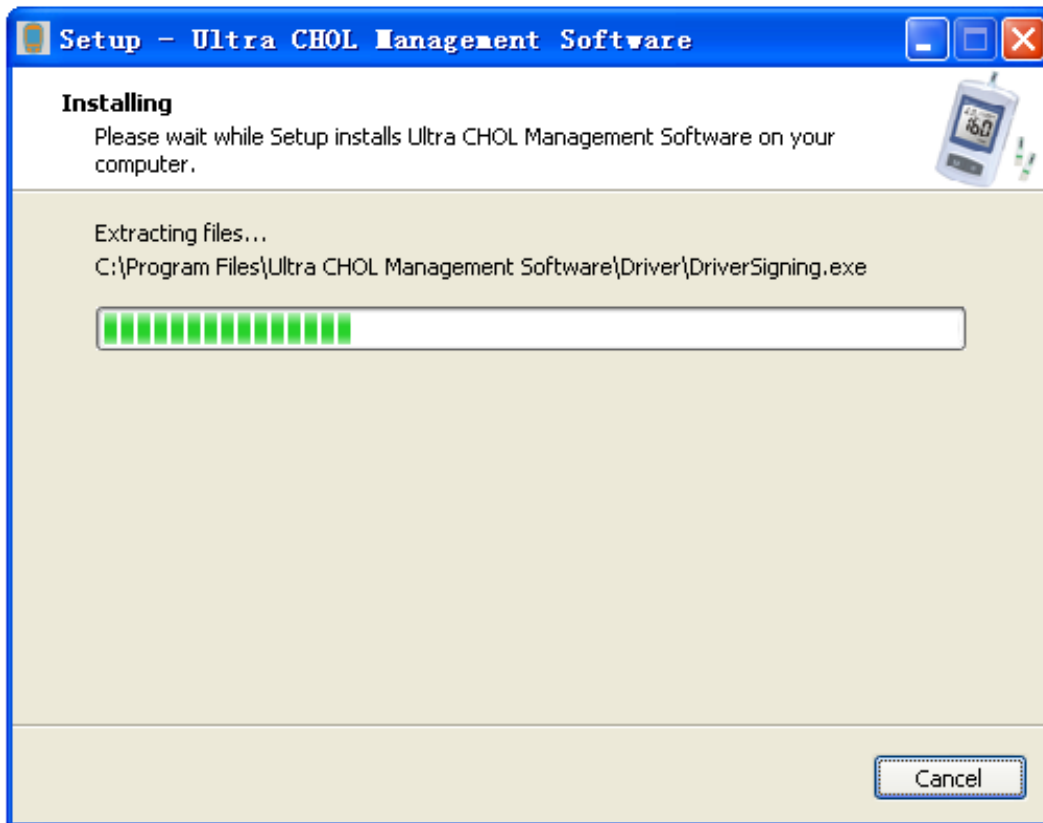
6. Select **Create a desktop icon**, then click **Next>**.



7. Before the installation files are installed, the screen shown below will be displayed. Click **Install** to continue with the installation process. Click **<Back** to modify or review any of the settings.



8. The following screen will be displayed, showing the progress of the installation.



9. Click **Finish** to complete the Setup Wizard.

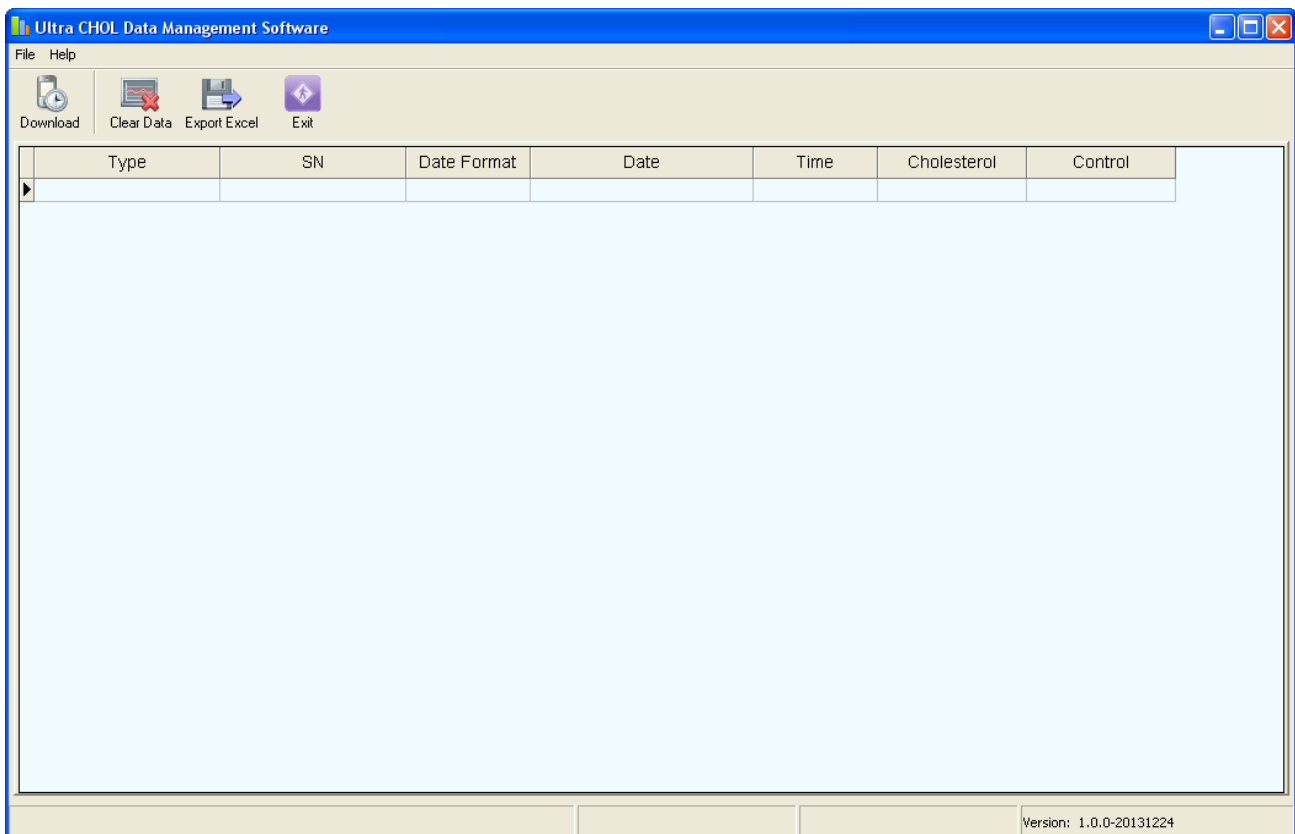


Ultra Cholesterol Management Software Startup

1. Select "Ultra CHOL Management Software" from the Program List to run the software, or double click the following icon on the desktop.



2. The Ultra Cholesterol Management Software screen will be displayed as shown below.



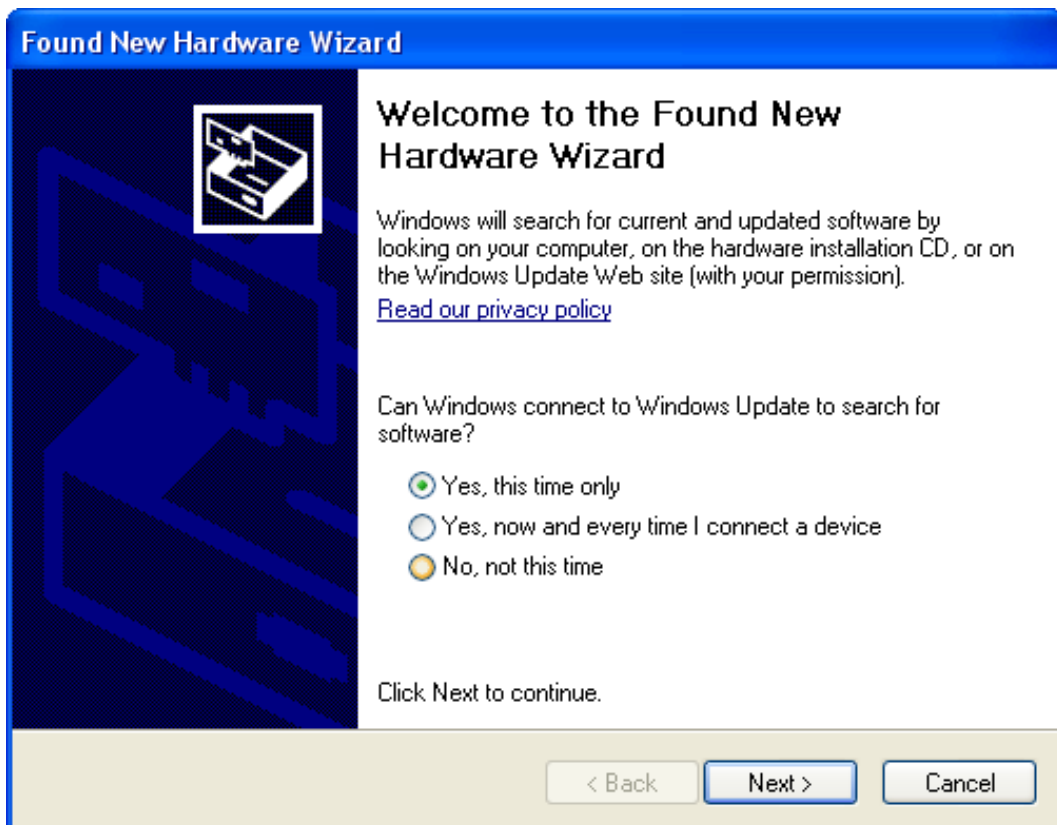
Driver Installation for First Time Use

Note: The steps below show the driver installation under the Operating System of Windows XP.

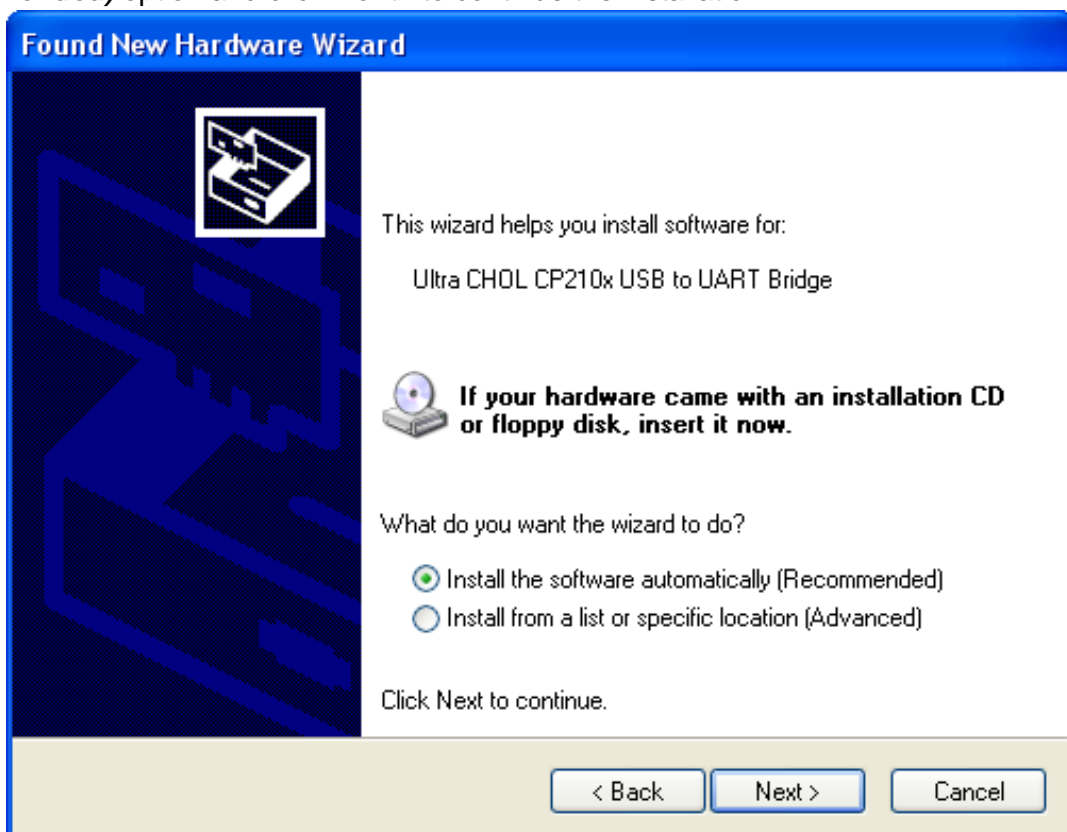
1. Connect the Ultra Cholesterol Meter to a PC using a USB cable. The Found New Hardware Wizard will be launched.



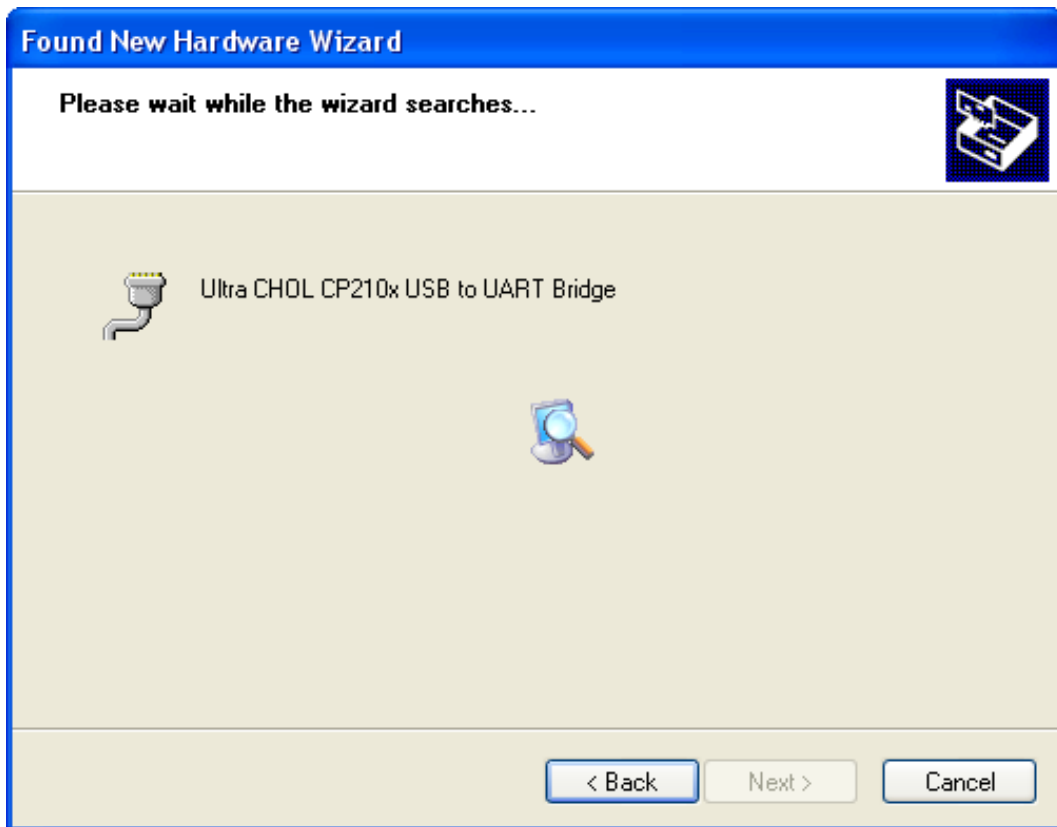
2. The Found New Hardware Wizard will display as shown below. It is suggested to select **Yes, this time only**, then click **Next>** to continue.



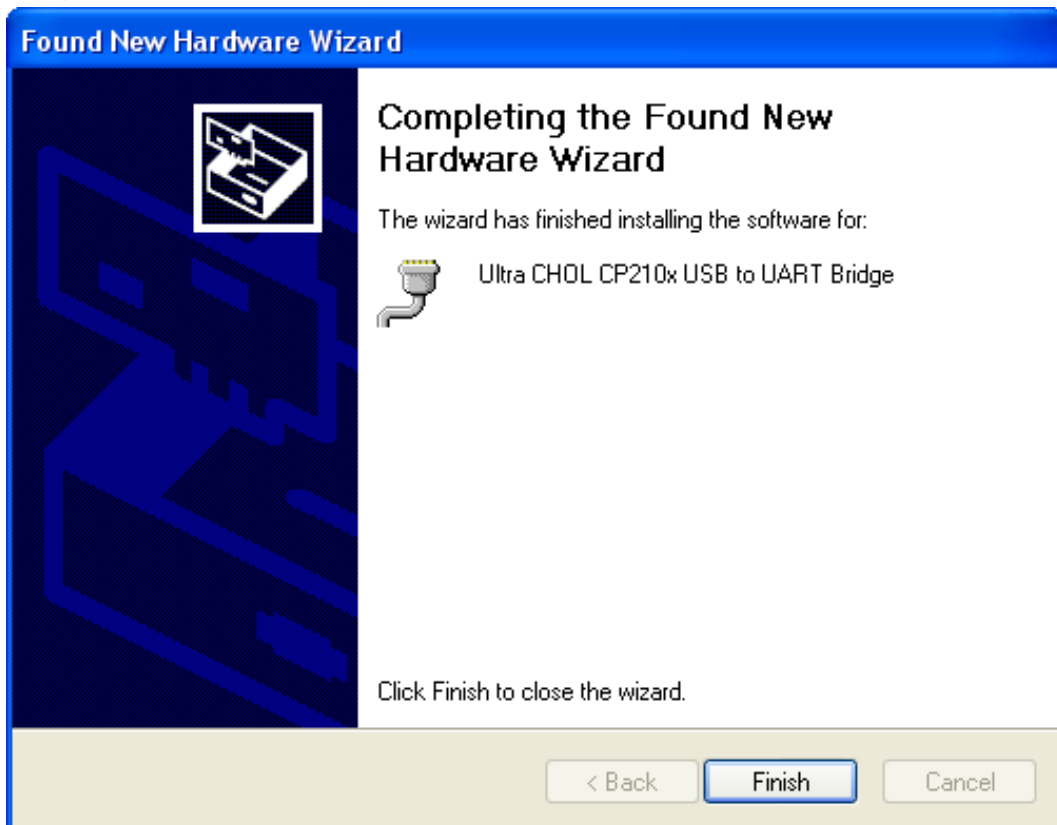
3. The USB driver will be installed automatically. Select **Install the software automatically (Recommended)** option and click **Next>** to continue the installation.



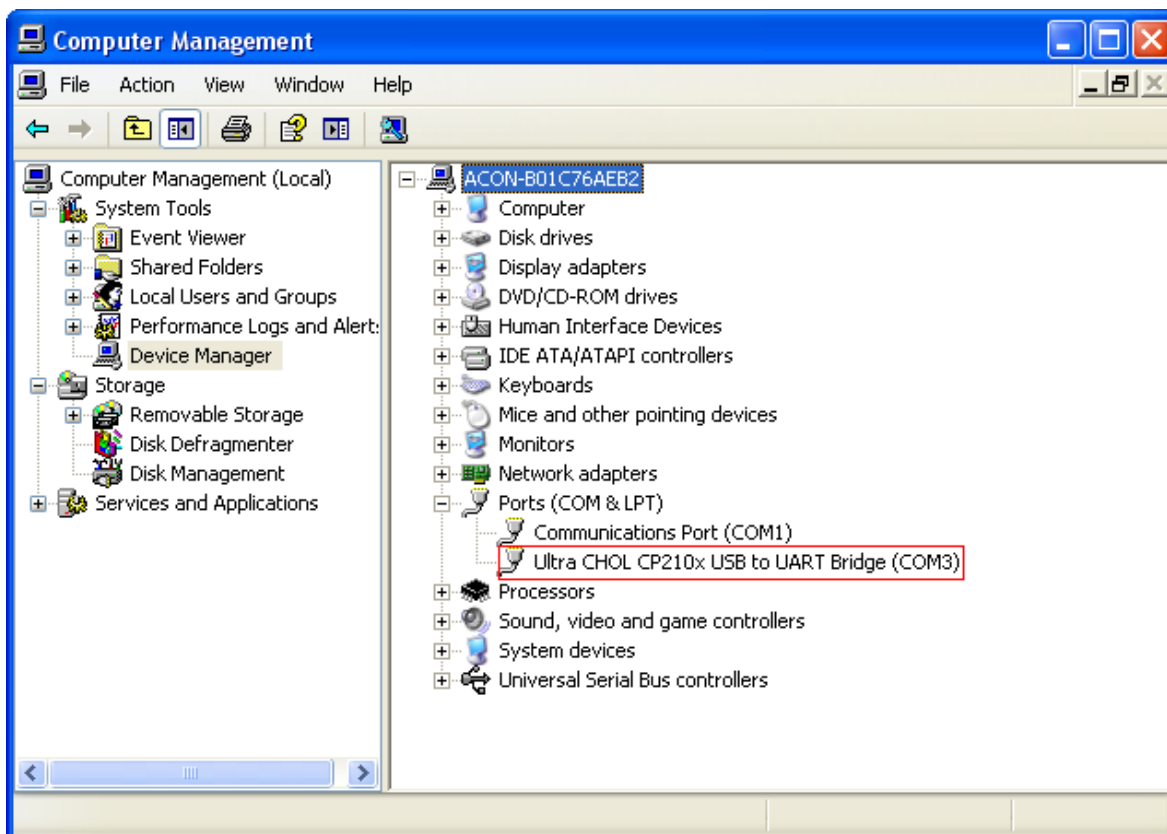
4. The following screen will be displayed, showing the progress of the automatic installation.



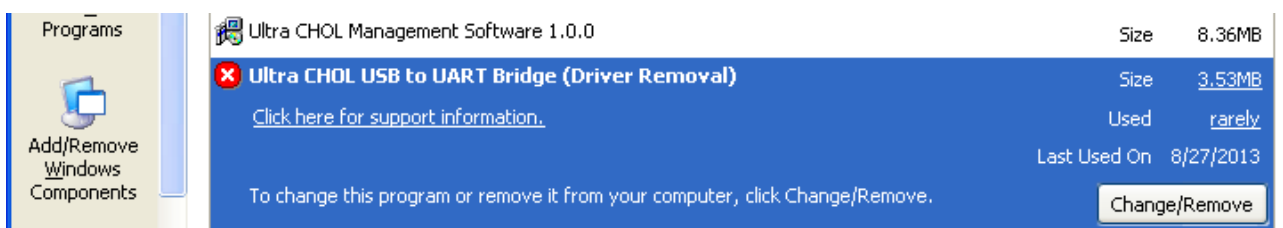
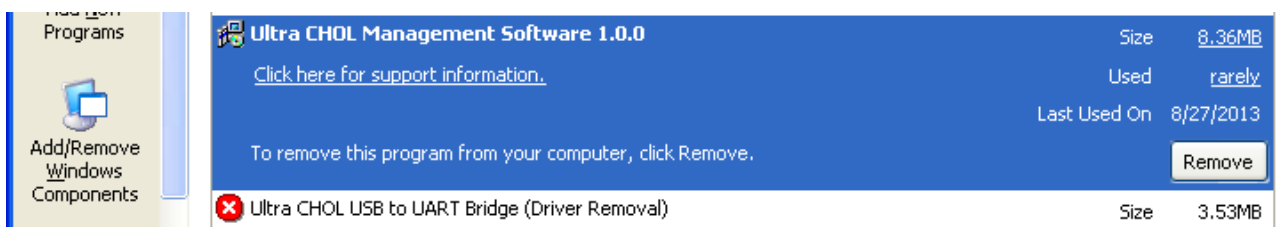
5. After the installation of the USB driver is complete, the screen shown below will be displayed. Click **Finish** to complete the Found New Hardware Wizard.



- Check the Computer Management of PC, the USB program will appear in the device list as shown below.



- If you install the software successfully, the CHOL Management Software and USB program will appear in Add or Remove Programs of the Control Panel as follows.

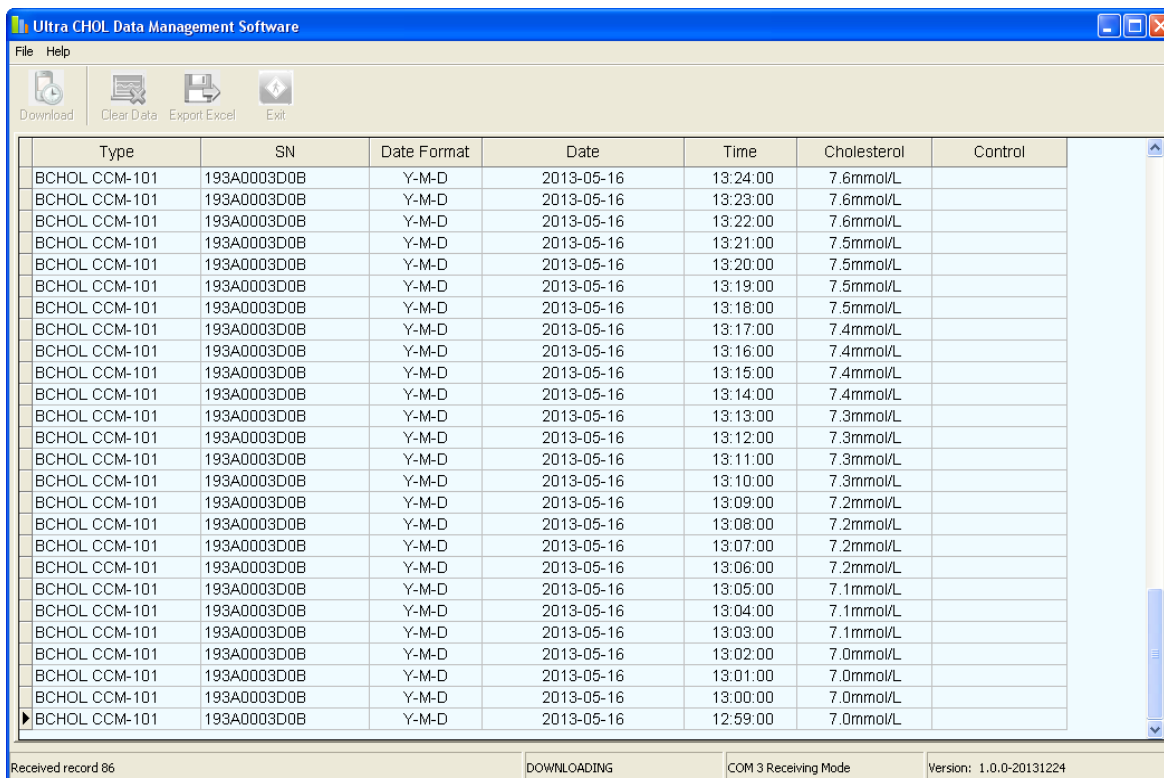


Downloading the Ultra Cholesterol Meter Data

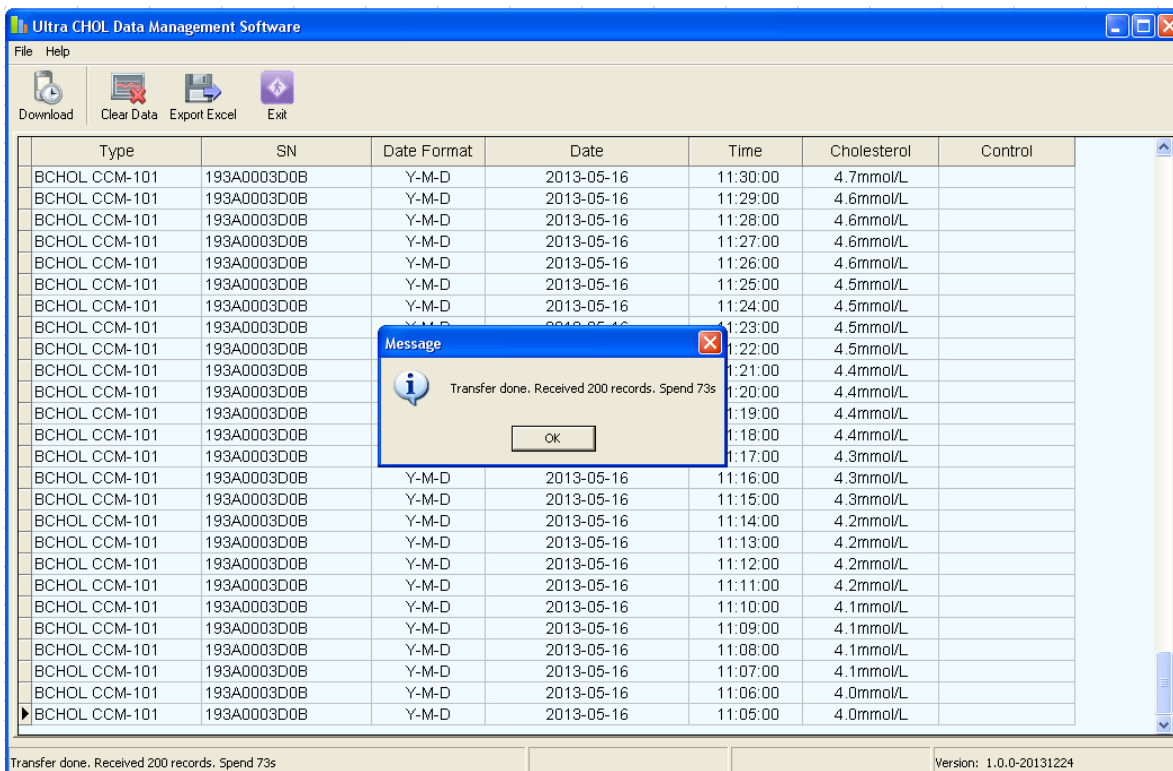
- Use a USB cable to connect the Ultra Cholesterol Meter with a PC.
Note: Please contact your local distributor for the USB Cable.
- Run Ultra CHOL Management Software.
- Turn on the Ultra Cholesterol Meter by holding both **M** button and **S** button down until **PC** is displayed
Note: Refer to **Using the Memory** in the Ultra Cholesterol Monitoring System User's Manual for

details.

4. Press the **Download** button to receive the data.
5. The records transferred to the PC are shown as below:



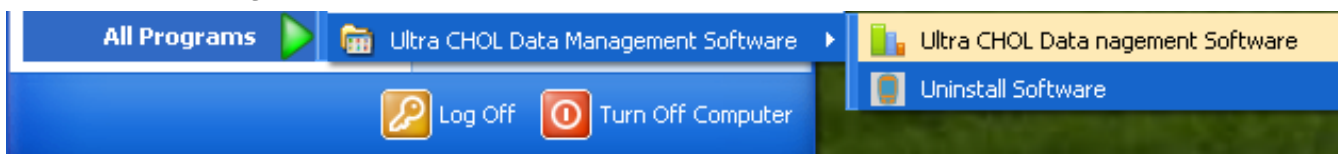
6. Data transferring will not stop until all records are copied to the software window. The records quantity and time used for transfer are shown on the bottom of the software interface. A message will pop up as follows when all the records are transferred to the PC. Click **OK** to complete the transferring. **Note:** Removing the USB cable from the Ultra Cholesterol Meter will stop the current data transfer automatically.



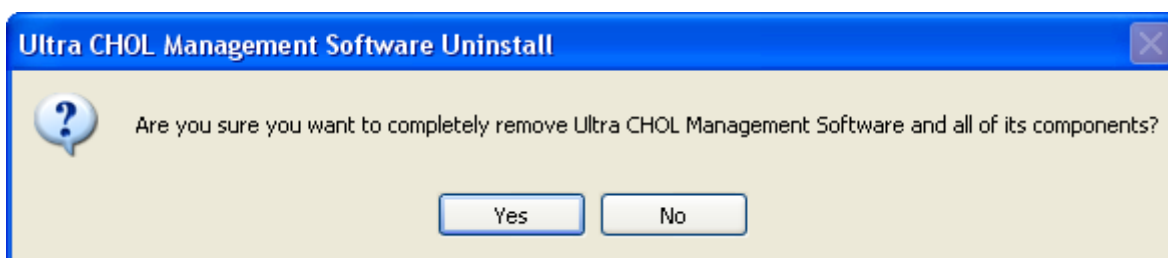
7. Turn off the Ultra Cholesterol Meter, or the meter will automatically turn off after 2 minutes of inactivity.
8. Press **Export Excel** to export the Data Format, Date, Time, Cholesterol and Control as shown on the window of the software program to an excel file, and then save it.
9. Press **Clear Data** to clear the data on the window or press the **Download** button to clear the data and begin the next transfer.

Driver Uninstallation

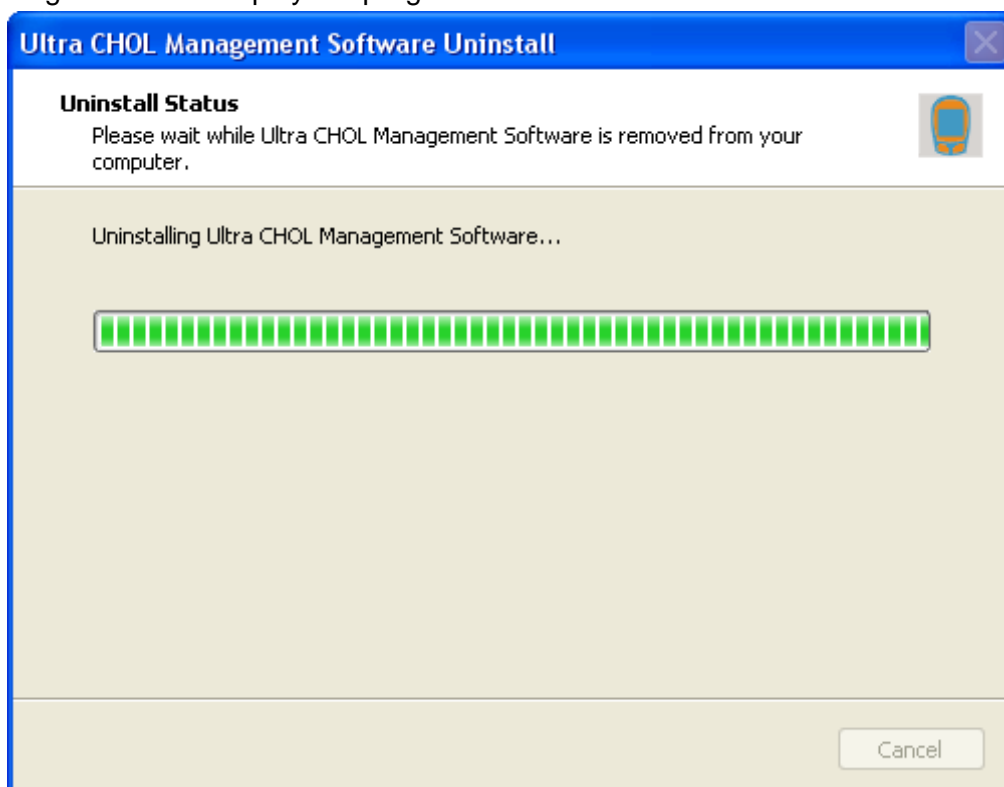
1. Go to the **Start** menu located on the bottom left corner of your computer. Select **All Programs** then **Ultra CHOL Management Software**. Click on **Uninstall Software**.



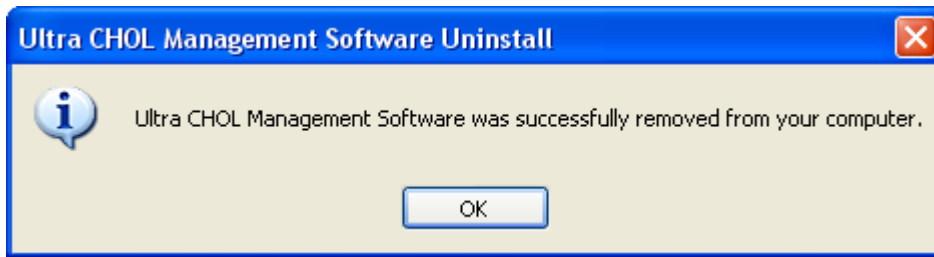
2. A message will pop up to confirm uninstalling the program as follows. Click **Yes** to completely remove the Ultra CHOL Management Software and all of its components.



3. The following screen will display the progress of the uninstallation.



4. Click **OK** to complete the uninstall process.



5. After you uninstall the Ultra CHOL Management Software successfully, the USB driver will be completely removed as well.

